



Riena User Interface

Carsten Drossel (andrena objects AG)

Heiko Barth (compeople AG)

Agenda



- Motivation of Riena User Interface
- How does it look like?
- Navigation
- Separation of View and Controller
- The Ridget
- Look & Feel

Motivation



- Why not just use RCP out of the box?
- What makes out a typical RCP application?
 - Flexibility
 - Dynamic Views and Editors
 - Perspectives
 - Customization
- What about end users of business applications?
 - What are their desires?
 - Similar requirements for all?
 - Same approach for all domains?



Reduce complexity!

Motivation



- Support the business end **user** to
 - Focus and concentrate on his business
 - Feel the navigation
 - Easily reach any point in the application

- Support the business **app developer** to
 - Easily build the application model
 - Focus on implementation of business logic
 - Use standard eclipse technology



Motivation

Riena Approach (end user)

- Intuitive, simplified navigation over flexibility
- Static layout
- Clear focus
- Strong highlighting of position
- Understandable markup concepts for application state



Motivation

Riena Approach (developer)

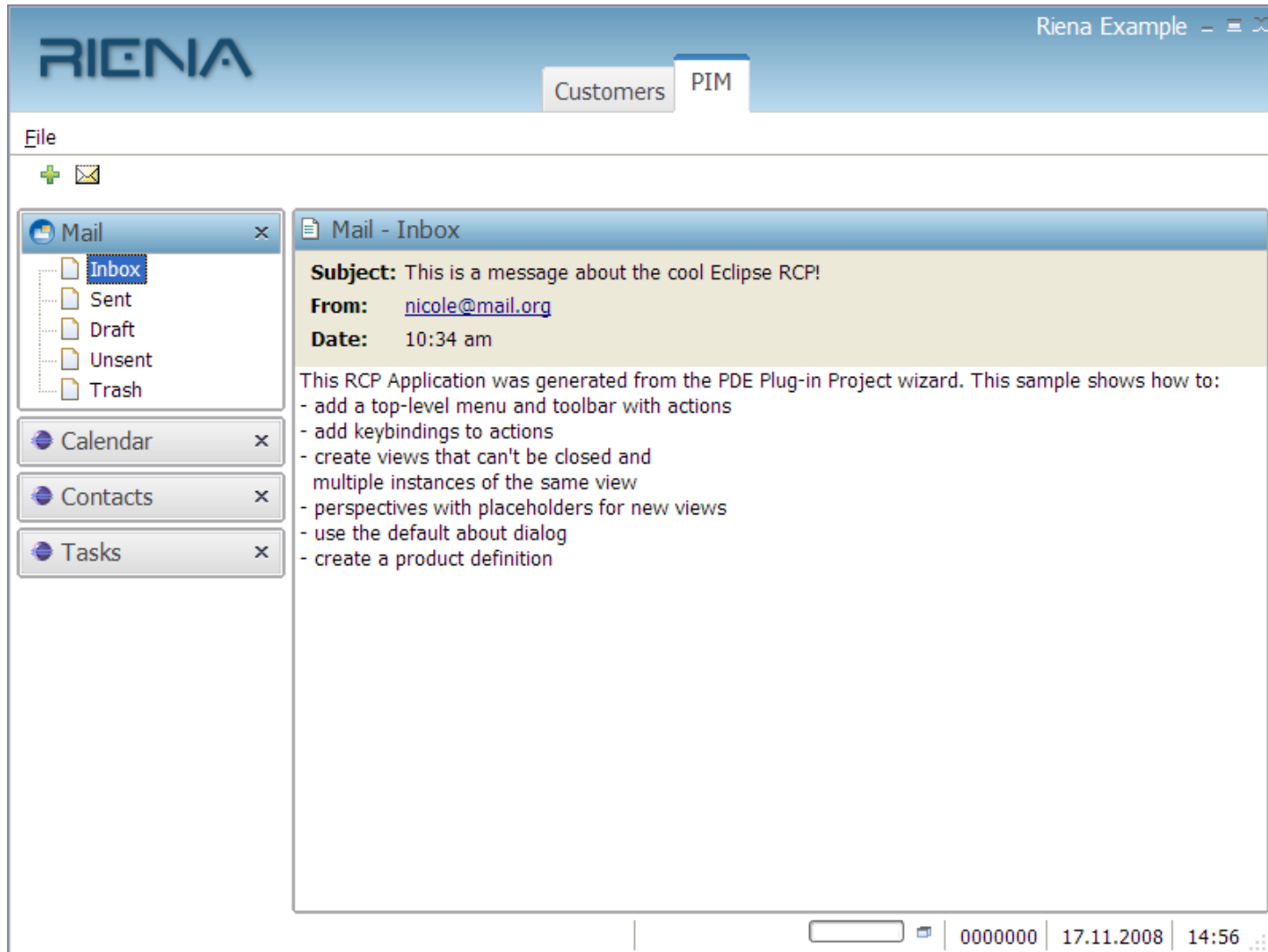
- Developer does not need to be an RCP expert
- Clean, simple application model API
- Convenience APIs
- Separate control logic from presentation

How does it look like?



The screenshot displays the RIENA web application interface. At the top, the RIENA logo is on the left, and the title bar shows "Riena Example" with window control icons. Below the logo, there are tabs for "Customers" and "PIM". A menu bar includes "File", "Context menu", and "Navigation menu". Below the menu bar, there are navigation icons and a search bar. A sidebar on the left contains a search bar and a list of items: "Jackson, John" (selected), "Personal Data", "Order History", and "Johnson, Jack". The main content area is titled "Jackson, John - Personal Data" and contains two sections: "Billing Address" and "Shipping Address". The "Billing Address" section has input fields for Name (John Jackson), Street (123 Fakestreet), and City (Jacksonville, FL), with "Save" and "Revert" buttons. The "Shipping Address" section has a checked checkbox for "Same as above" and empty input fields for Name, Street, and City, also with "Save" and "Revert" buttons. At the bottom right, there is a status bar with a search bar, a numeric value "0000000", a date "17.11.2008", and a time "14:52".

How does it look like?



Navigation

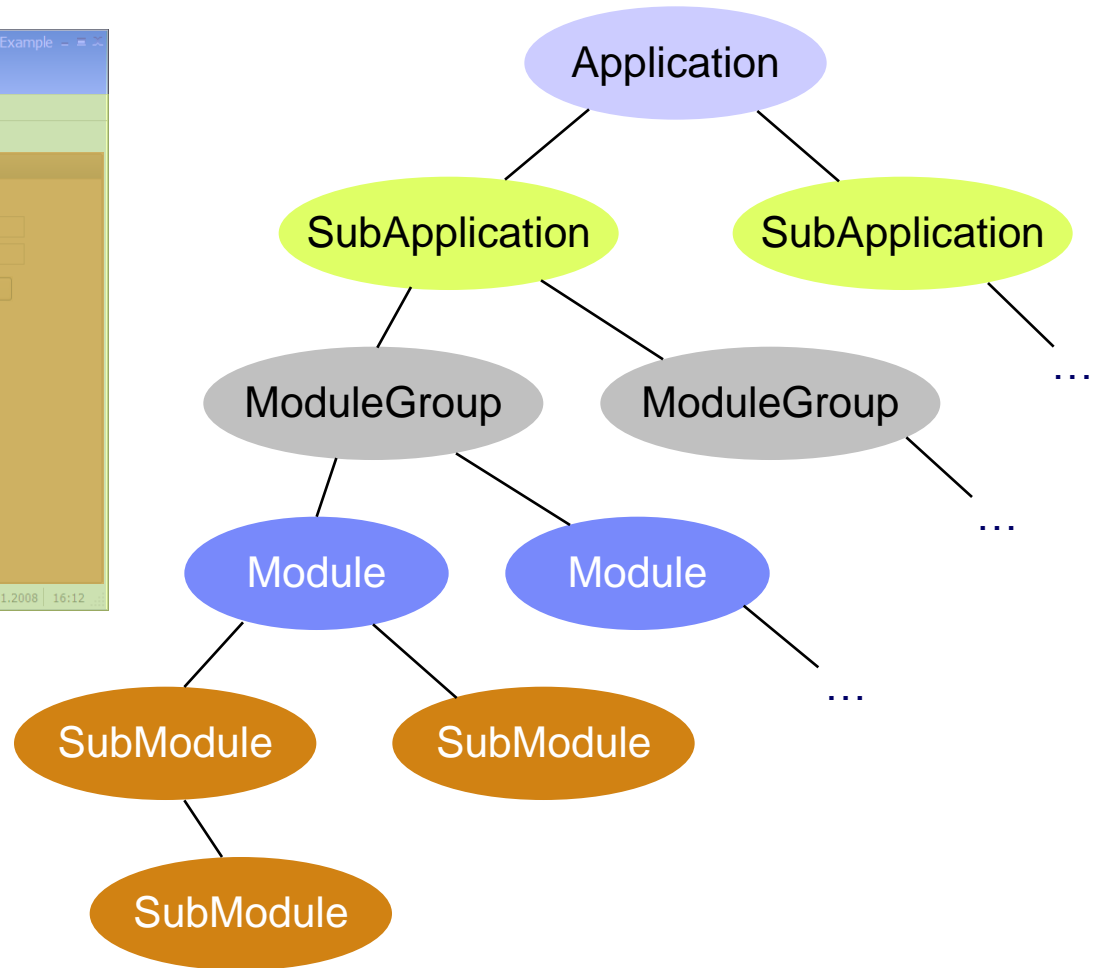
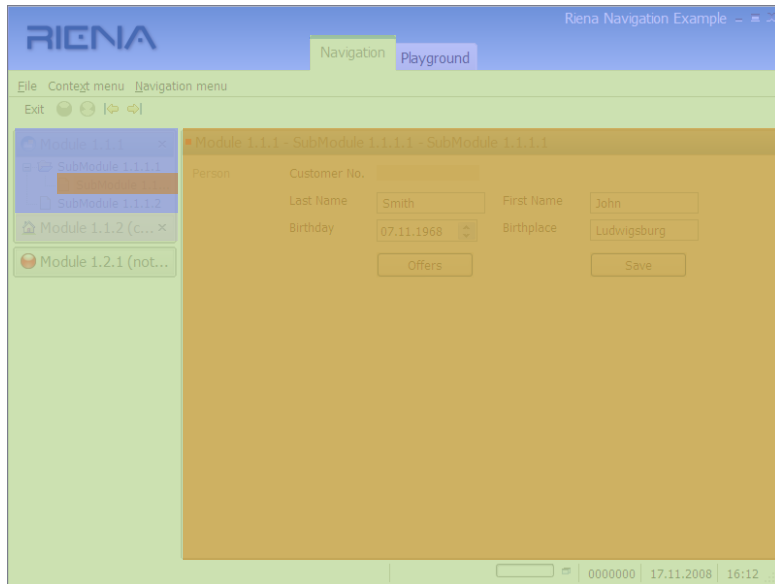


Find your way

- What is my position?
- How can I get from A to B?

How is it done in Riena?

Navigation

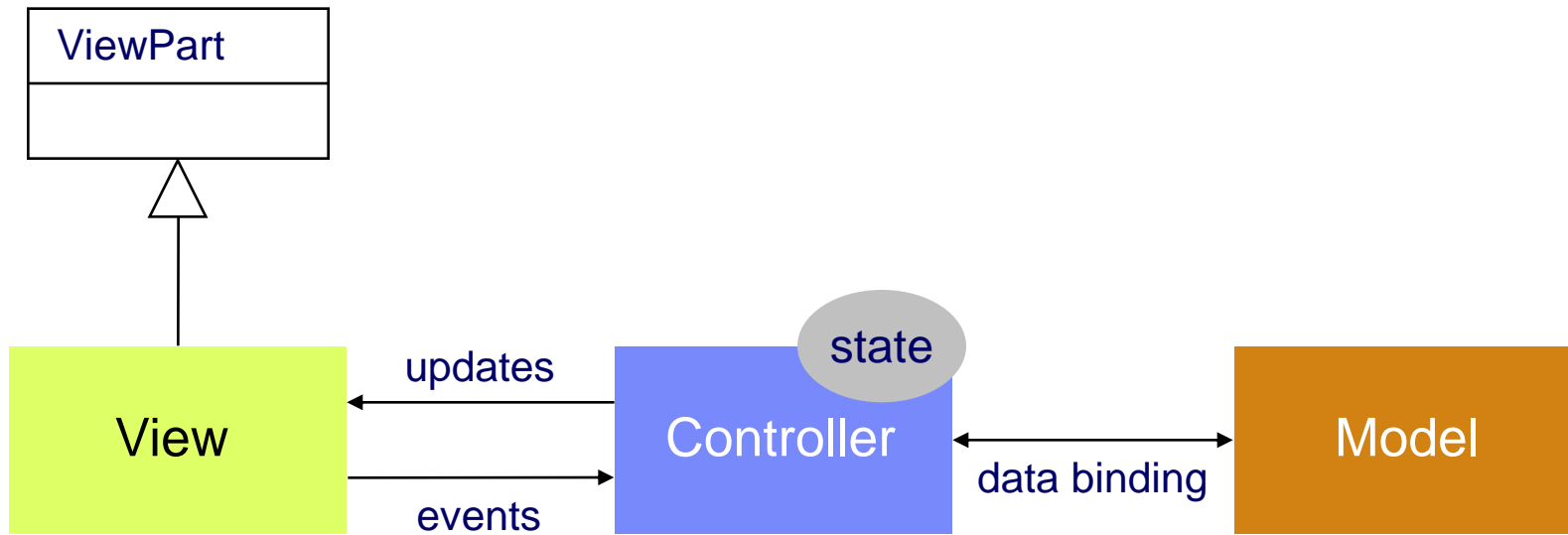


Navigation



- Different levels
- One work area
- Grouping of related data
- Strong highlighting
- Hiding non related data

Separation of View and Controller



View



- Only the presentation
- Instantiation and layout of widgets
- Can be generated by UI builder tools
- No control logic
- No data binding
- No service calls

Controller



The Controller

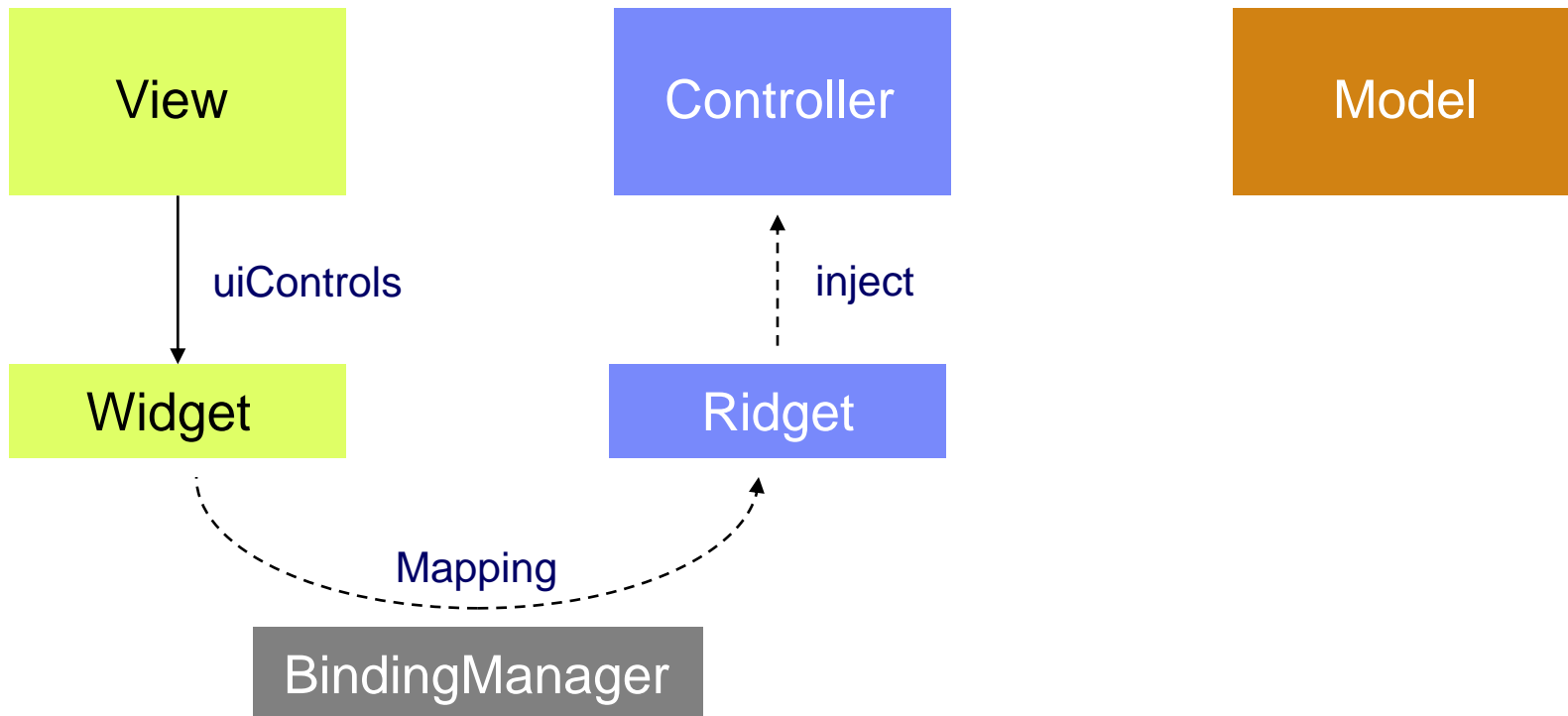
- Contains the business logic
- UI-toolkit (SWT) independent
- Connection to the navigation model
- Controls the widgets through Ridgets

Ridgets

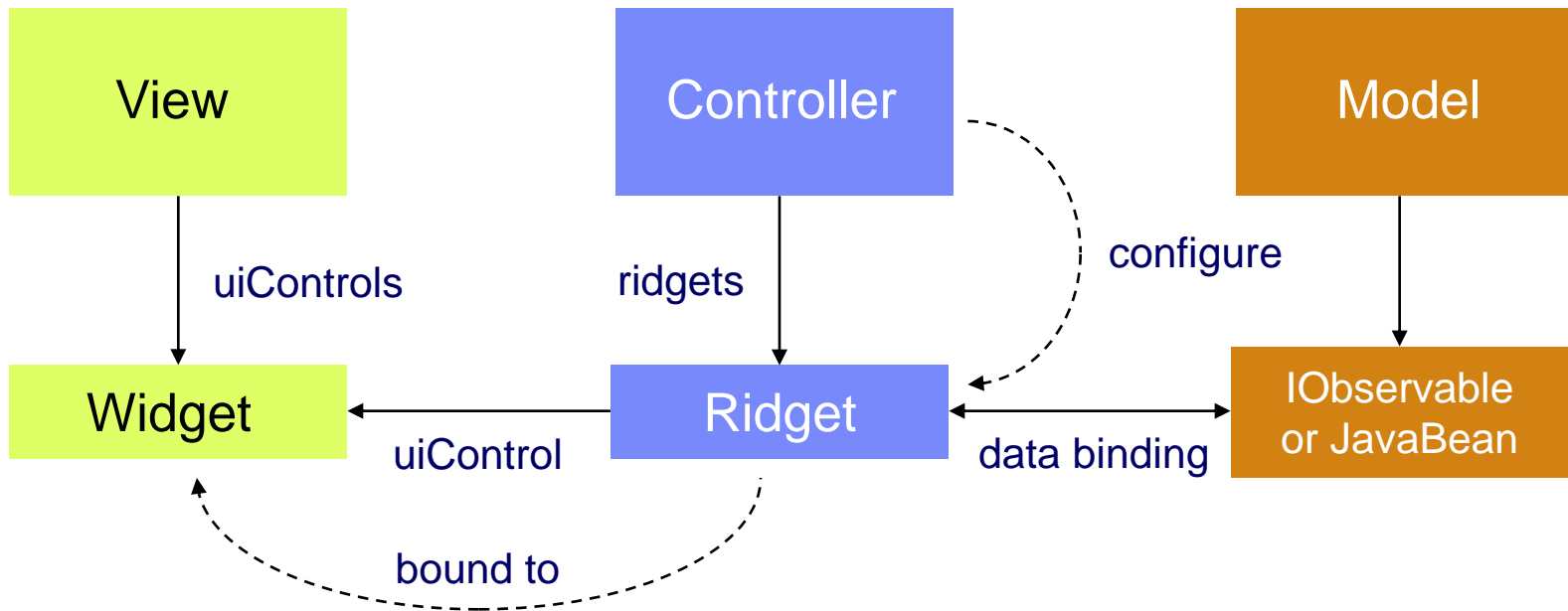


- Wrapper for a widget
- Specific for each type of widget
 - TextRidget, ButtonRidget, etc.
- Injected into the Controller

Ridgets



Ridgets

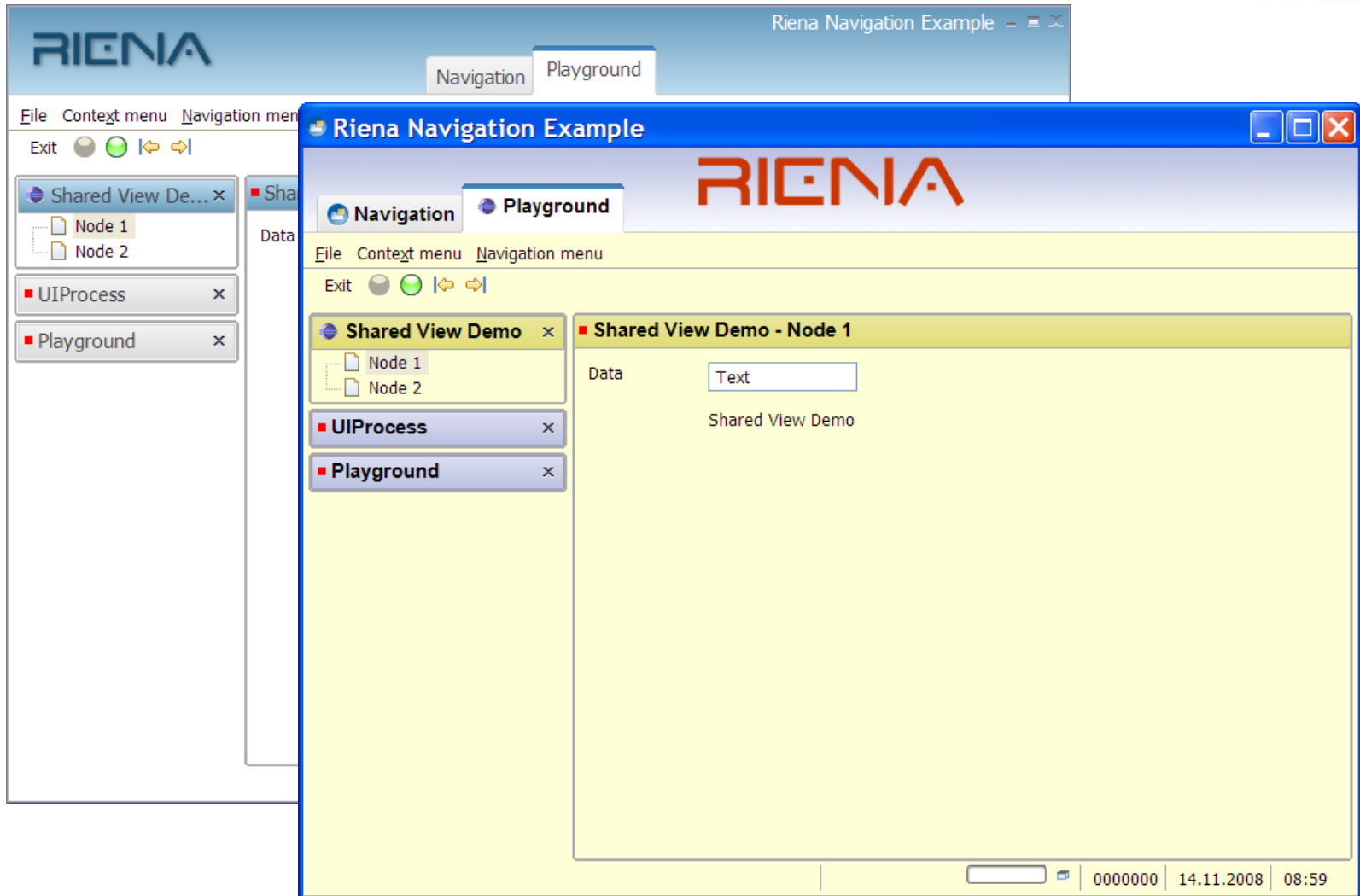




Look & Feel

- Navigation widgets drawn by Renderers
- Theme
 - Colors
 - Fonts
 - Icons, etc.
- Customize appearance
 - Subclass RienaDefaultTheme
- Deeper customization
 - Subclass Renderers
- See http://wiki.eclipse.org/Riena_Look_and_Feel

Look & Feel



Thank you!



- <http://www.eclipse.org/riena/>
- <http://www.compeople.de/veroeffentlichungen>